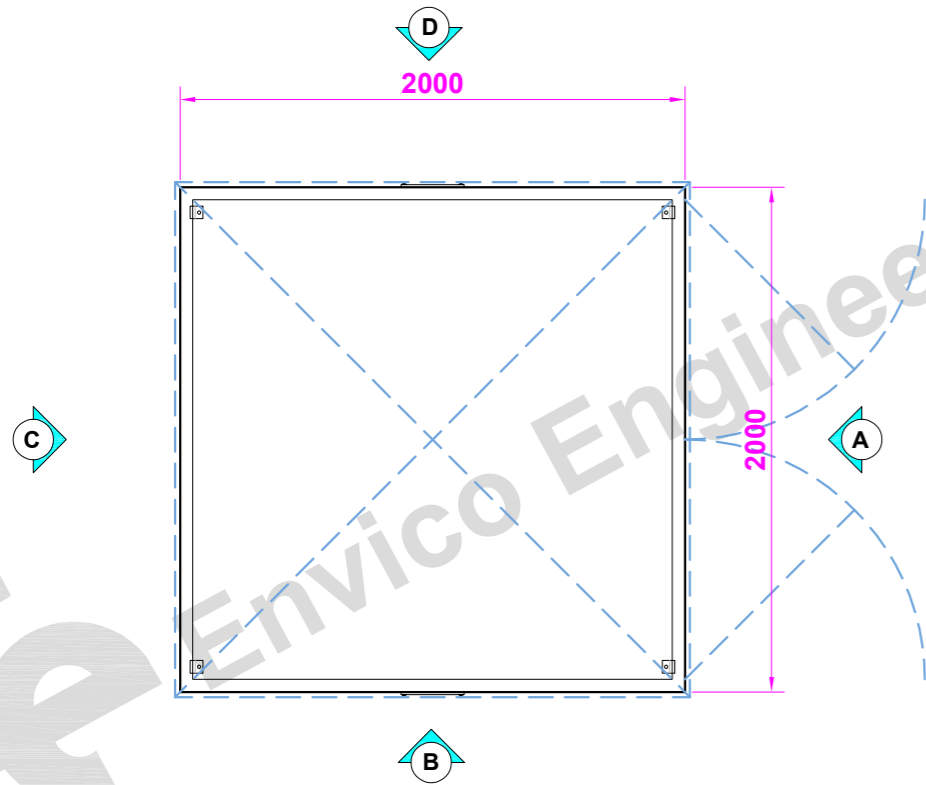
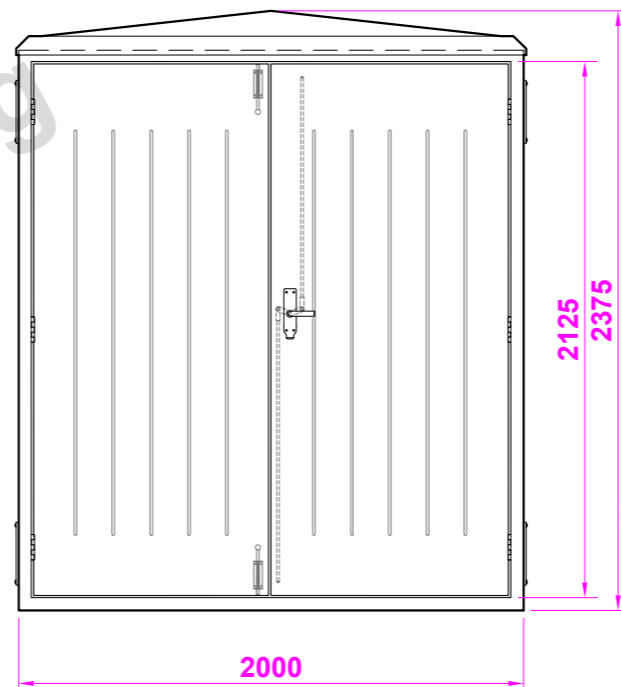


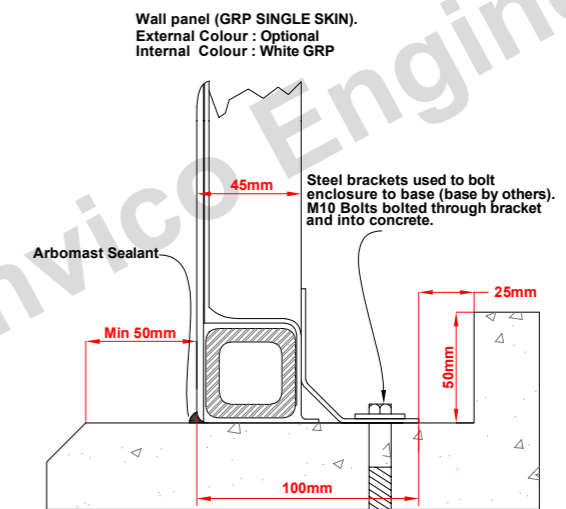
**Plan View**



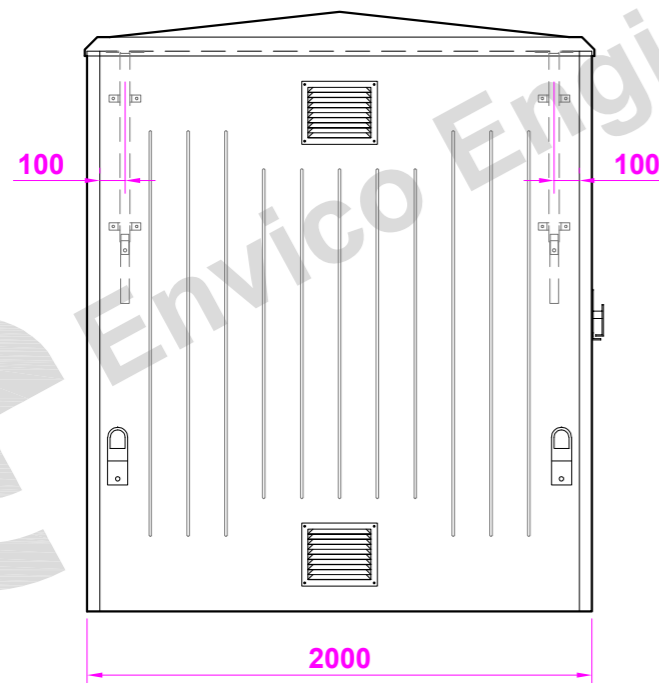
**Elevation (A) (front)**



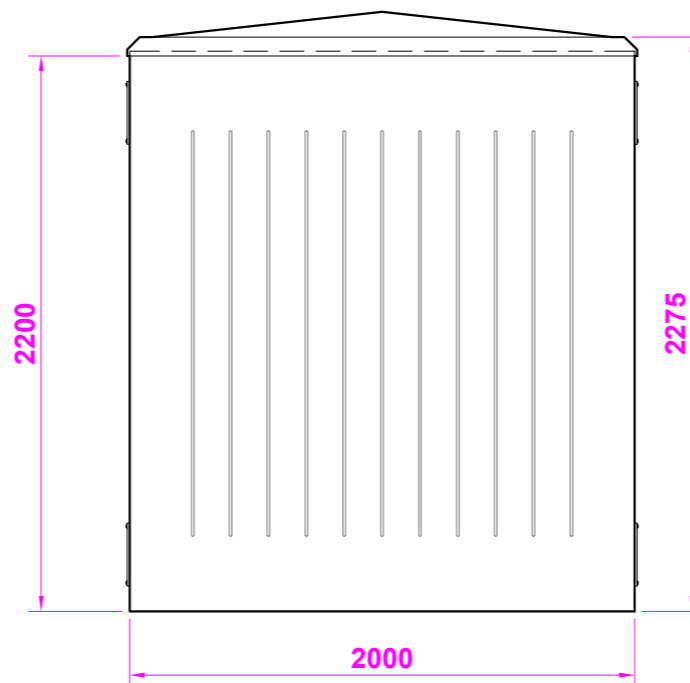
**TYPICAL STEPPED BASE DETAIL (RECOMMENDED)**



**Elevation (B) (l/h side)**



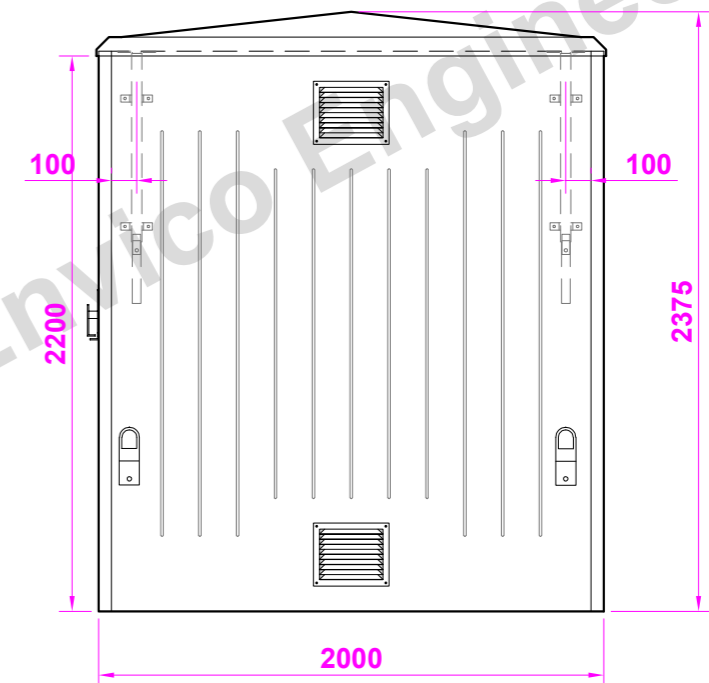
**Elevation (C) (rear)**



**OPTIONAL EXTRAS:**

- 18mm Sadolin treated mounting board to inside of rear wall.
- Double skin.

**Elevation (D) (r/h side)**



**CONSTRUCTION DETAILS**

INTERNAL WIDTH : 1890mm  
INTERNAL DEPTH : 1890mm  
INTERNAL HEIGHT : 2275mm

EXTERNAL WIDTH : 2000mm  
EXTERNAL DEPTH : 2000mm  
EXTERNAL HEIGHT : 2375mm

**G.R.P CONSTRUCTION**

LAYER 1. GEL COAT, COLOURED.  
LAYER 2. 450GRM/M.SQ GLASS & RESIN  
LAYER 3. 450GRM/M.SQ GLASS & RESIN  
LAYER 4. 450GRM/M.SQ GLASS & RESIN

ALL RESIN TO CLASS II FIRE RETARDANT GRADE.  
ALL REINFORCING BETWEEN LAYERS 3 & 4

FRONT & BACK REINFORCED BY WELDED  
40 x 40 STEEL BOX FRAME.  
DOORS TO HAVE STEEL ALL  
ROUND WITH TIMBER STIFFNERS.  
ROOF TO HAVE TIMBER STIFFNERS WITH  
PRESSED STEEL ANGLE AROUND BASE.

**PARTS LIST**

ITEM	QTY.	COMMENTS	ITEM	QTY.	COMMENTS
GRP DOUBLE DOOR	1	1900mm X 2125mm	TIMBER BATTENS		ENCAPSULATED IN ROOF
STAINLESS STEEL DOOR HINGES	6	ELEVATIONS A (DOORS)	GALV STEEL VENTS 250mm X 200mm	4	ELEVATIONS B & D
ST - STEEL ESPAGNOLETTE LATCH	1	ELEVATIONS A	EXPLOSION RELIEF BRACKETS	4	ELEVATIONS B & D
ST-STEEL SPRING TOWER BOLTS	2	ELEVATION A	ST - STEEL FIXING FEET	4	DRILLED FOR M10 X 100 BOLTS
10/10 STEEL DOOR STAYS	2	ELEVATION A	LIFTING EYES	4	ELEVATIONS B & D



**G.R.P HOUSING  
MODEL TR11**  
APPROX WEIGHT: 300kg



**Envico Engineering**

THE DRAWING AND DESIGN IS THE PROPERTY OF ENVICO ENGINEERING LTD. AND WITHOUT THE WRITTEN CONSENT OF ENVICO ENGINEERING LTD. MAY NOT BE COPIED IN WHOLE OR IN PART OR COMMUNICATED TO A THIRD PARTY OR USED FOR ANY PURPOSE.