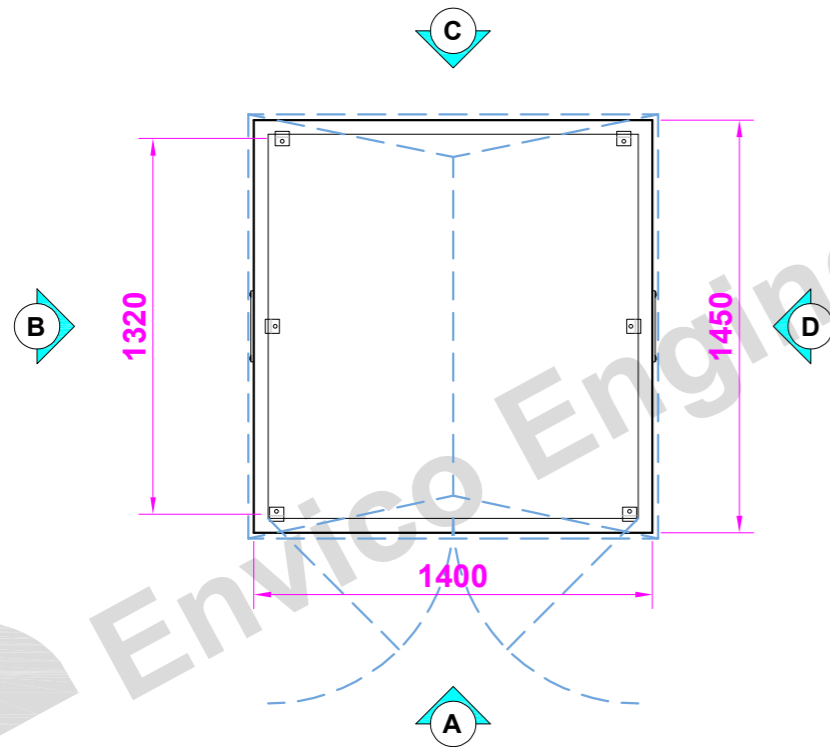
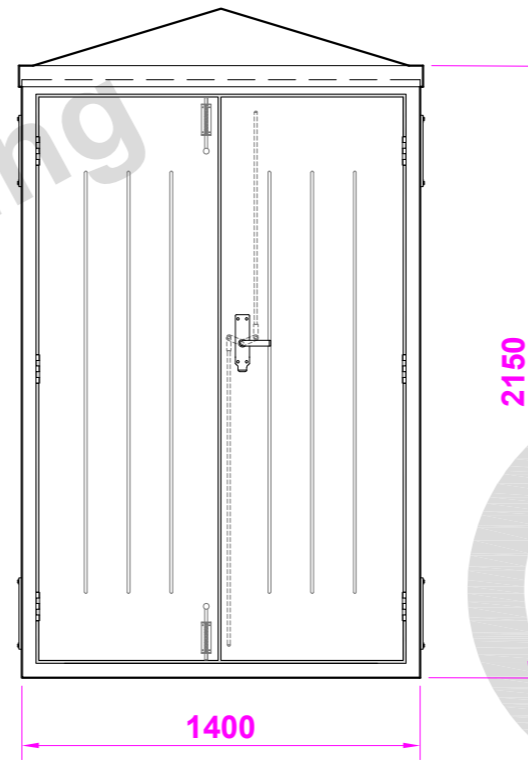


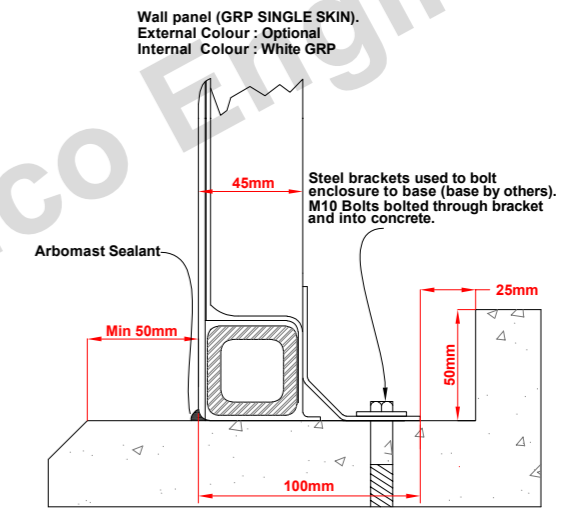
Plan View



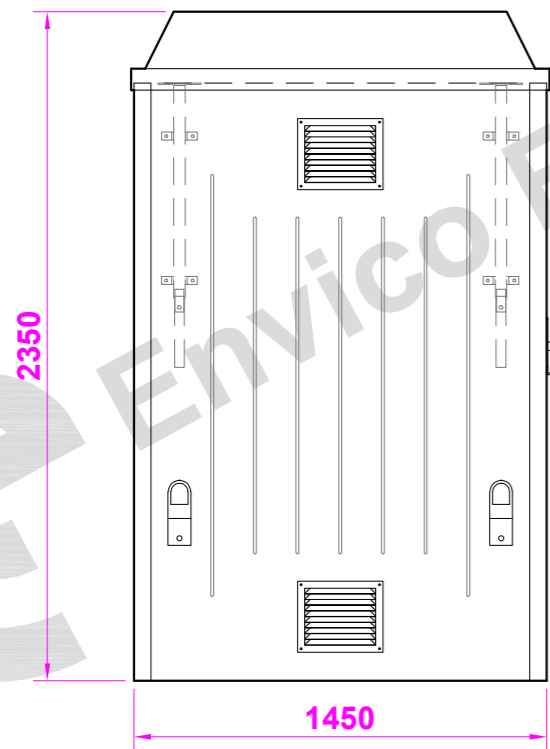
Elevation (A) (front)



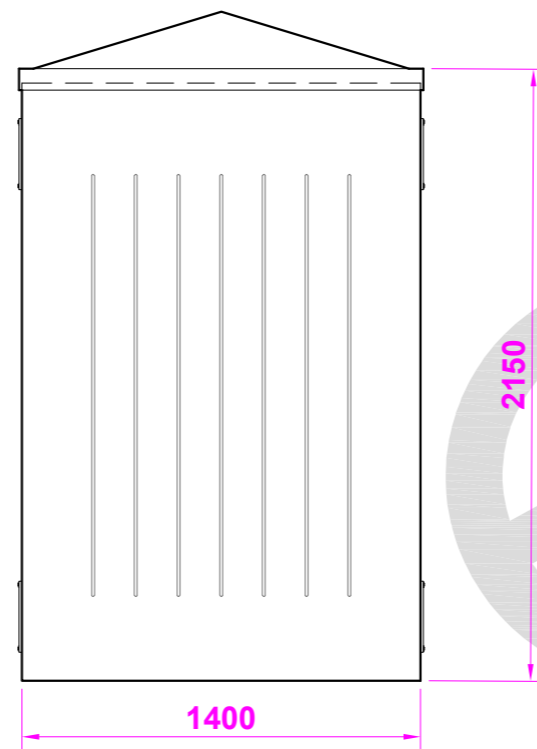
TYPICAL STEPPED BASE DETAIL (RECOMMENDED)



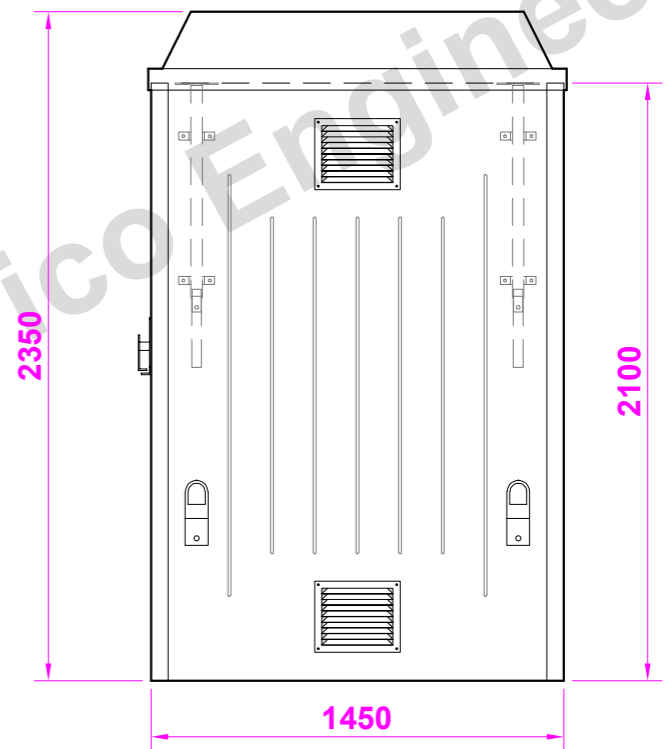
Elevation (B) (l/h side)



Elevation (C) (rear)



Elevation (D) (r/h side)




**G.R.P HOUSING
MODEL TR4**
APPROX WEIGHT: 260kg

CONSTRUCTION DETAILS

INTERNAL WIDTH : 1290mm
INTERNAL DEPTH : 1340mm
INTERNAL HEIGHT : 2150mm

EXTERNAL WIDTH : 1400mm
EXTERNAL DEPTH : 1450mm
EXTERNAL HEIGHT : 2350mm

G.R.P CONSTRUCTION

LAYER 1. GEL COAT, COLOURED.
LAYER 2. 450GRM/M.SQ GLASS & RESIN
LAYER 3. 450GRM/M.SQ GLASS & RESIN
LAYER 4. 450GRM/M.SQ GLASS & RESIN

ALL RESIN TO CLASS II FIRE RETARDANT GRADE.
ALL REINFORCING BETWEEN LAYERS 3 & 4
ROOF DOUBLE SKINNED WITH 18mm FOAM INFILL.

PARTS LIST

ITEM	QTY.	COMMENTS	ITEM	QTY.	COMMENTS
GRP DOUBLE DOOR	1	1300mm X 2000mm	GALVANISED STEEL VENTS 250mm X 200mm	4	ELEVATIONS B & D
STAINLESS STEEL DOOR HINGES	6	ELEVATION A	EXPLOSION RELIEF BRACKETS	4	ELEVATIONS B & D
ST - STEEL ESPAGNOLETTE LATCH	1	ELEVATION A	LIFTING EYES	4	ELEVATIONS B & D
ST-STEEL SPRING TOWER BOLTS	2	ELEVATION A	ST - STEEL FIXING FEET	4	DRILLED FOR M10 X 100 BOLTS
10/10 DOOR STAYS	2	ELEVATION A			



Envico Engineering

THE DRAWING AND DESIGN IS THE PROPERTY OF ENVICO ENGINEERING LTD. AND WITHOUT THE WRITTEN CONSENT OF ENVICO ENGINEERING LTD. MAY NOT BE COPIED IN WHOLE OR IN PART OR COMMUNICATED TO A THIRD PARTY OR USED FOR ANY PURPOSE.