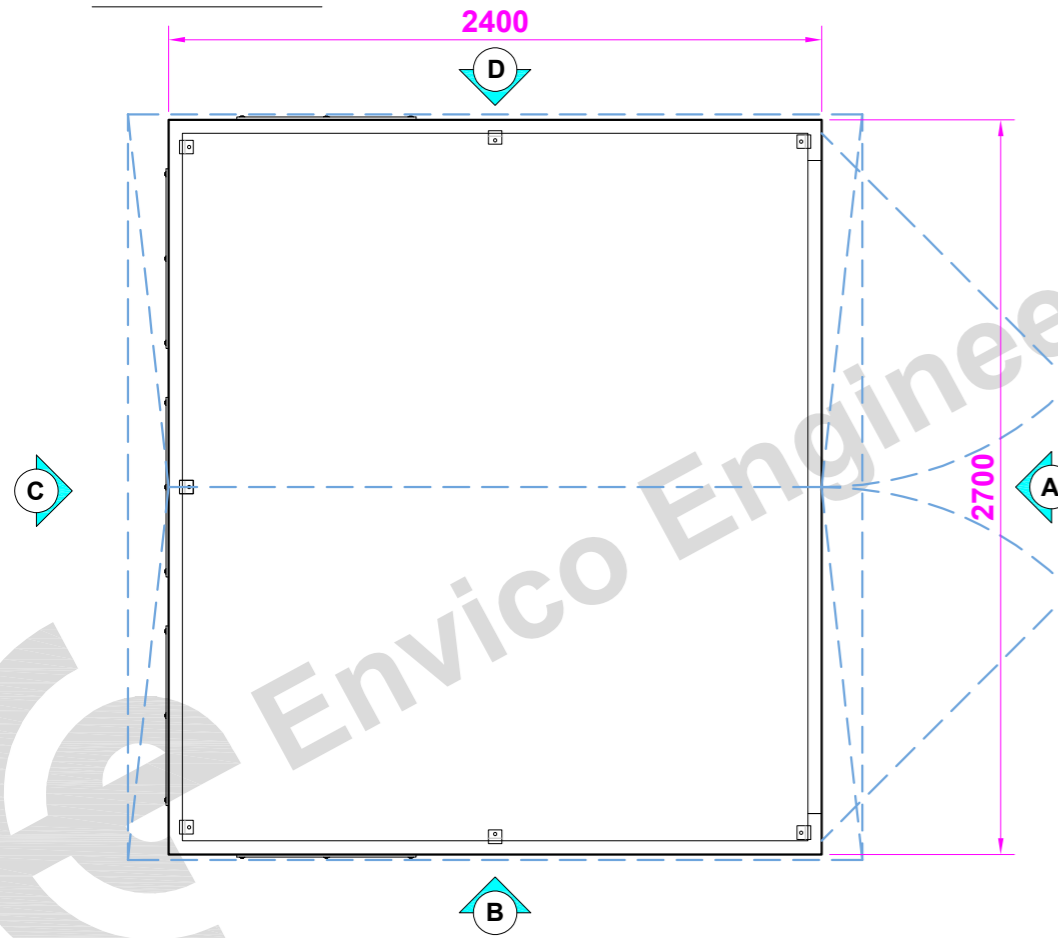
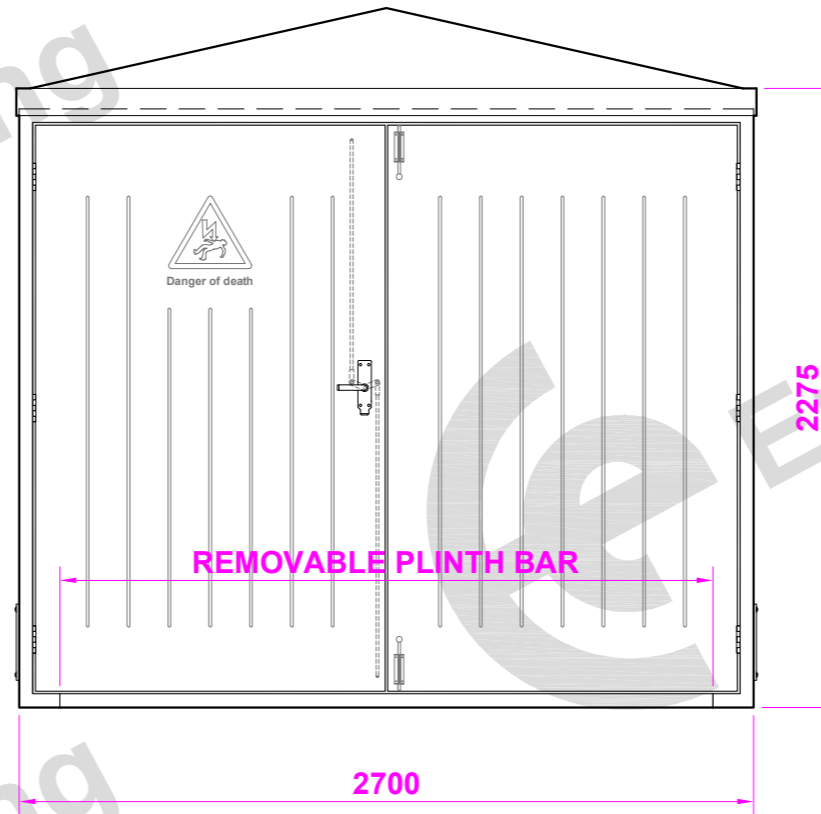


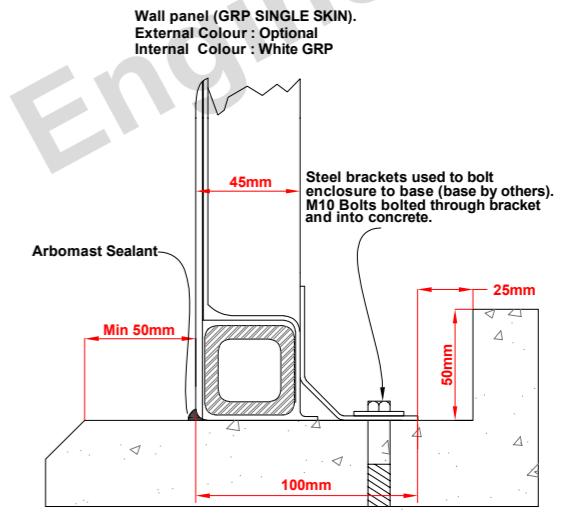
Plan View



Elevation (A) (front)

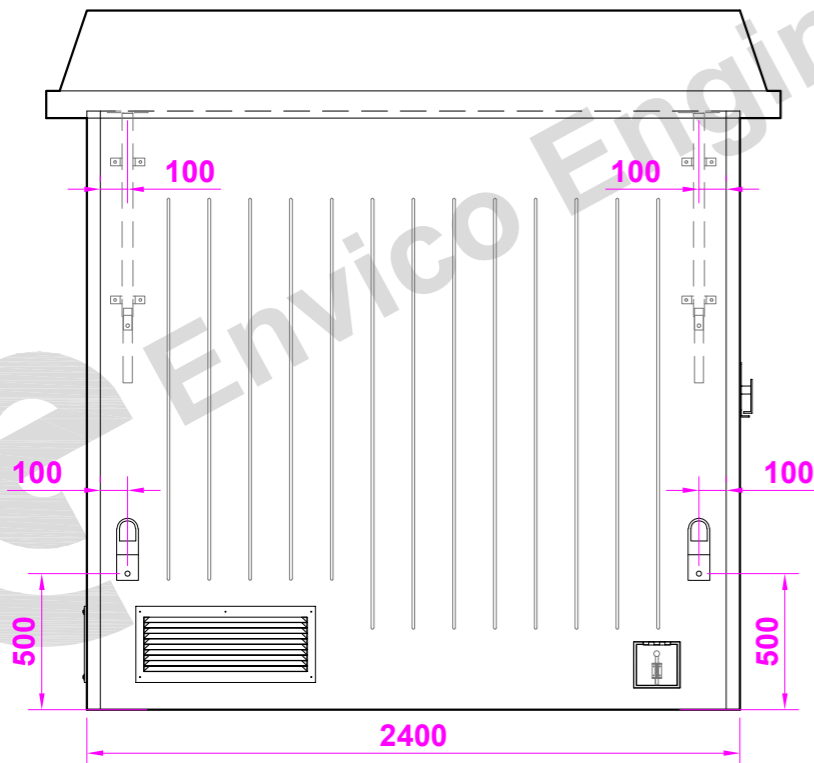


TYPICAL STEPPED BASE DETAIL (RECOMMENDED)

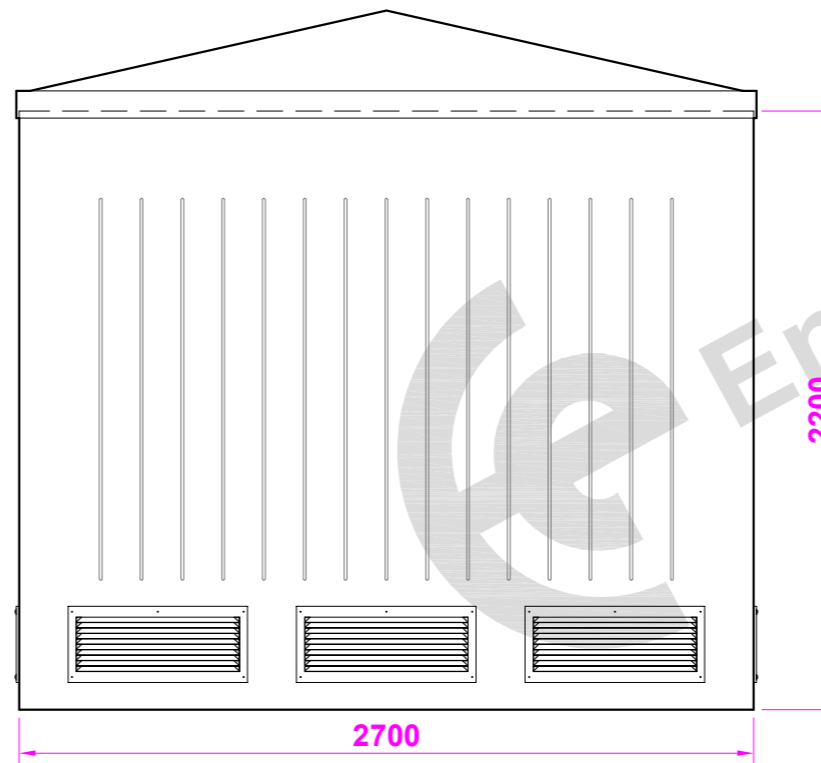


Elevation (B) (l/h side)

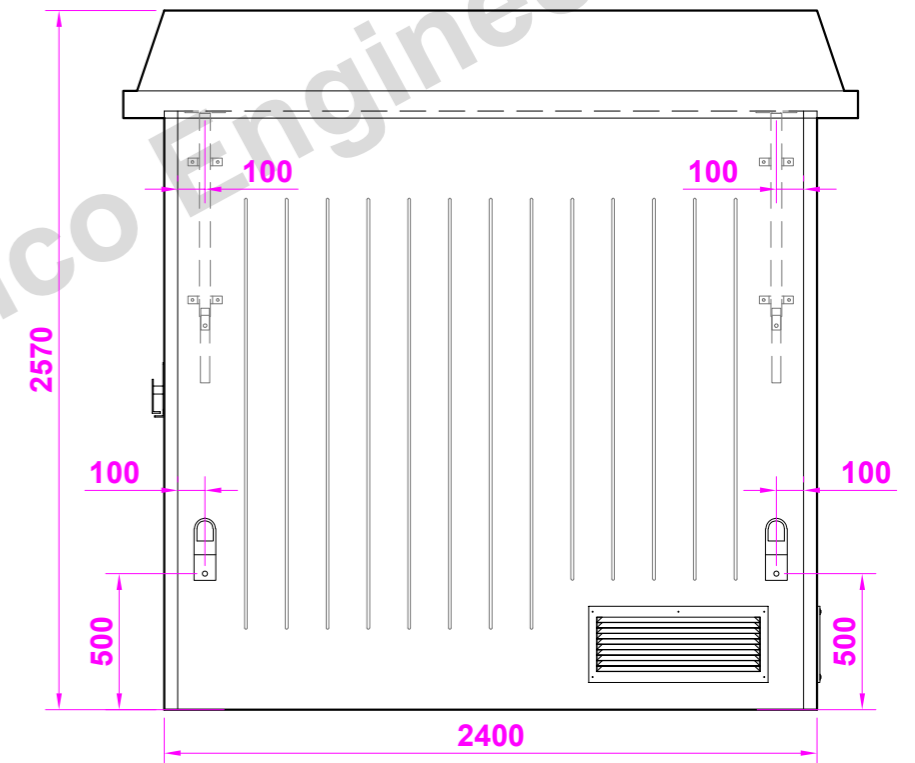
ROOF OVERHUNG AT FRONT AND REAR TO PROVIDE HIGH LEVEL VENTILATION



Elevation (C) (rear)



Elevation (D) (r/h side)



PARTS LIST

ITEM	QTY.	COMMENTS	ITEM	QTY.	COMMENTS
GRP DOUBLE DOOR	1	2600mm X 2100mm	GALV STEEL VENTS 660mm X 280mm	5	ELEVATIONS B, C & D
STAINLESS STEEL DOOR HINGES	6	ELEVATION A	EXPLOSION RELIEF BRACKETS	4	ELEVATIONS B & D
ST - STEEL ESPAGNOLETTE LATCH	1	ELEVATION A	ST - STEEL FIXING FEET	7	DRILLED FOR M10 X 100 BOLTS
ST-STEEL SPRING TOWER BOLTS	2	ELEVATION A	DANGER OF DEATH DOOR MOULD	1	ELEVATION A (ON DOORS)
10/10 DOOR STAYS	2	ELEVATION A	GENERATOR CABLE HATCH 170mm X 170mm	1	ELEVATION B
REMOVABLE PLINTH BAR	1	ELEVATION A (IN DOORS)			
REMOVABLE LIFTING EYES	4	ELEVATIONS B & D			

CONSTRUCTION DETAILS

INTERNAL WIDTH : 2590mm
INTERNAL DEPTH : 2290mm
INTERNAL HEIGHT : 2275mm

EXTERNAL WIDTH : 2700mm
EXTERNAL DEPTH : 2400mm
EXTERNAL HEIGHT : 2570mm

G.R.P CONSTRUCTION

LAYER 1. GEL COAT, COLOURED.
LAYER 2. 450GRM/M.SQ GLASS & RESIN
LAYER 3. 450GRM/M.SQ GLASS & RESIN
LAYER 4. 450GRM/M.SQ GLASS & RESIN

ALL RESIN TO CLASS II FIRE RETARDANT GRADE.
ALL REINFORCING BETWEEN LAYERS 3 & 4

**G.R.P HOUSING
MODEL TR6**
APPROX WEIGHT: 450kg



THE DRAWING AND DESIGN IS THE PROPERTY OF ENVICO ENGINEERING LTD. AND WITHOUT THE WRITTEN CONSENT OF ENVICO ENGINEERING LTD. MAY NOT BE COPIED IN WHOLE OR IN PART OR COMMUNICATED TO A THIRD PARTY OR USED FOR ANY PURPOSE.