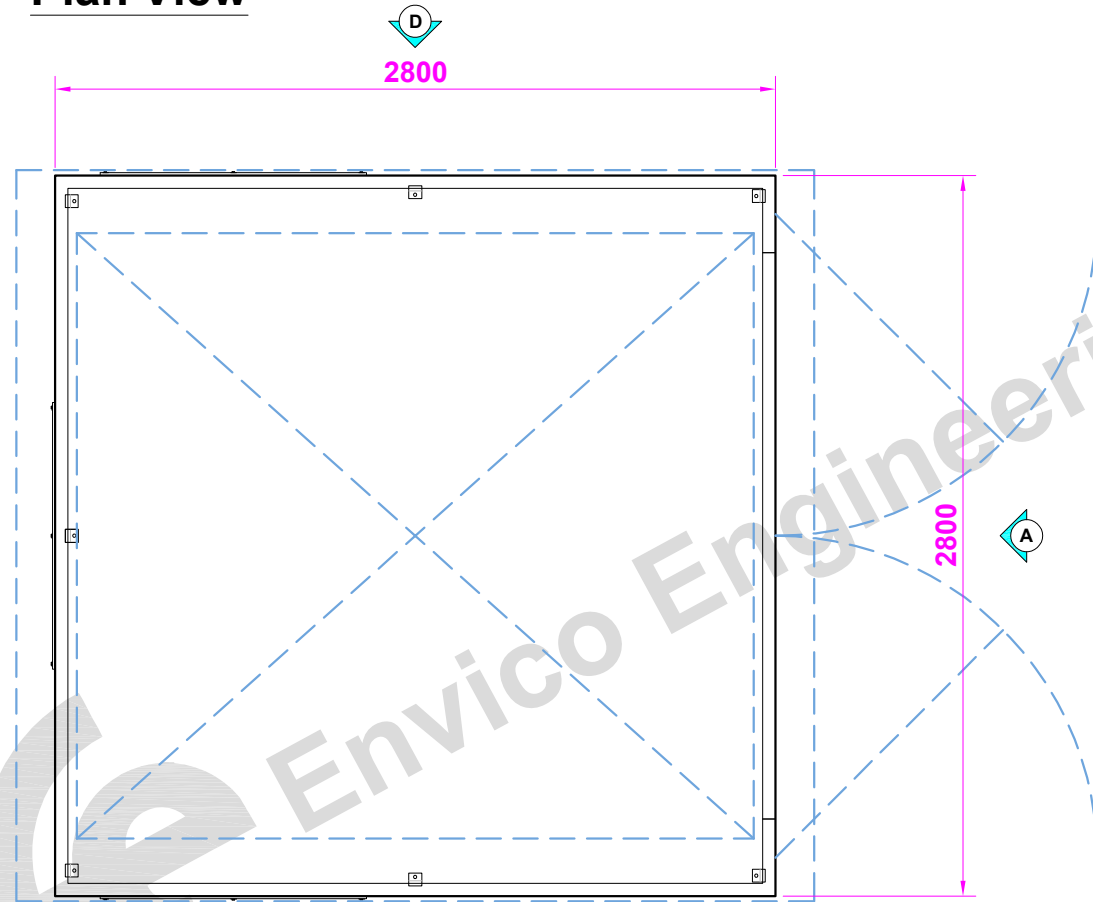
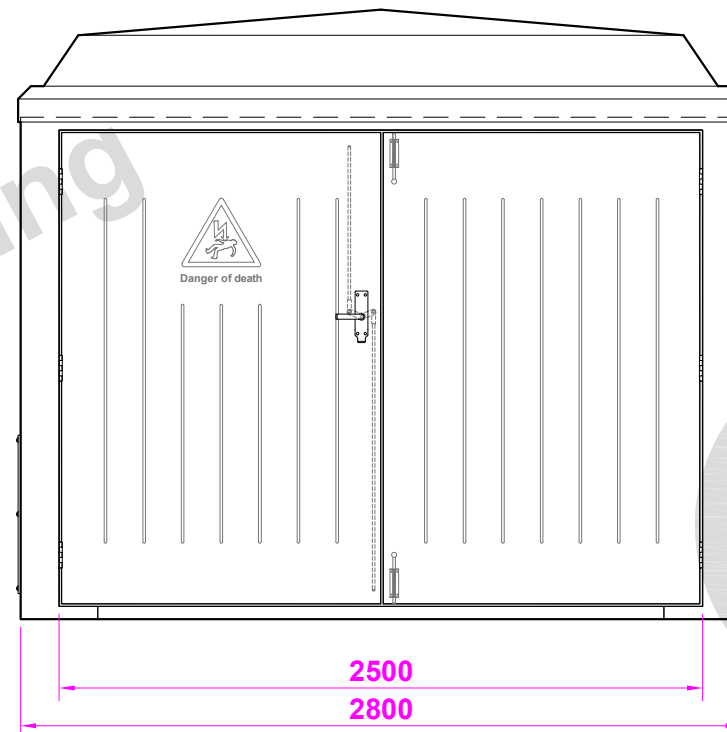


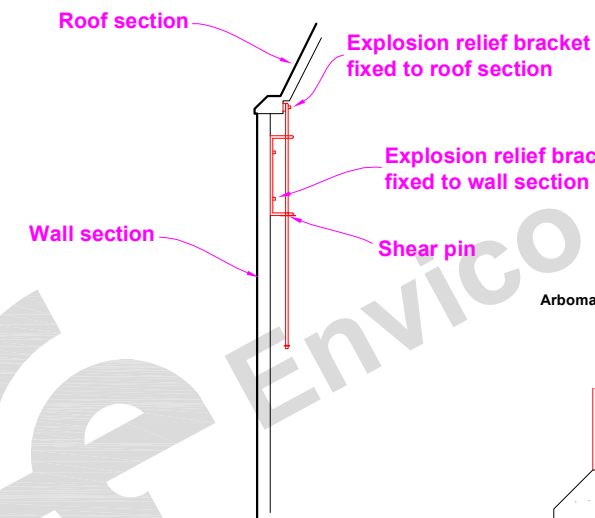
**Plan View**



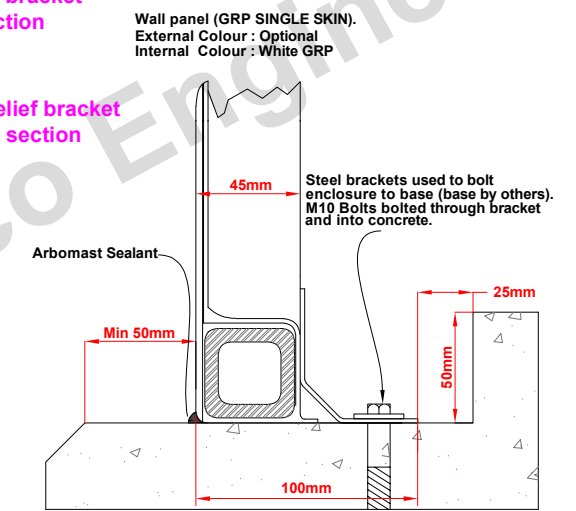
**Elevation (A) (front)**



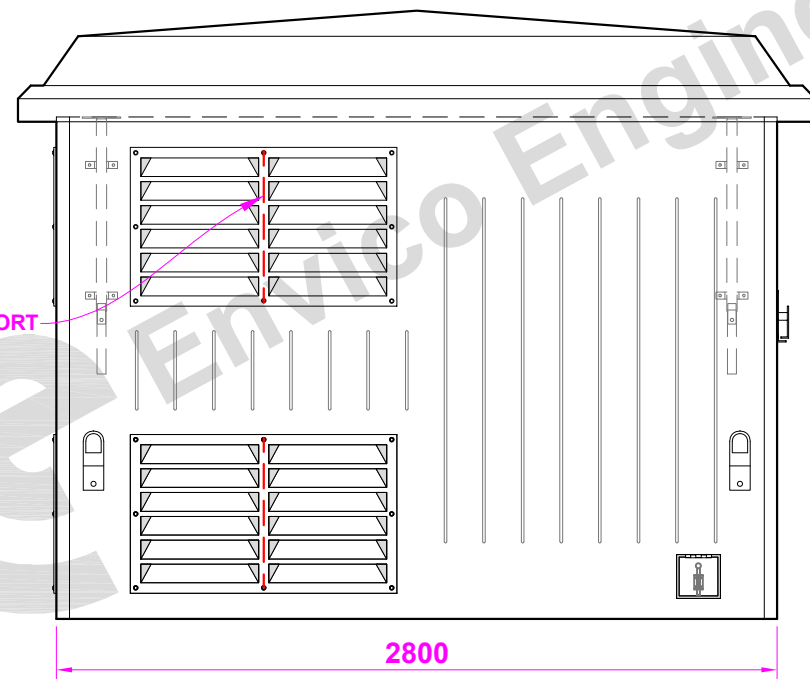
**Roof Fixing Detail**



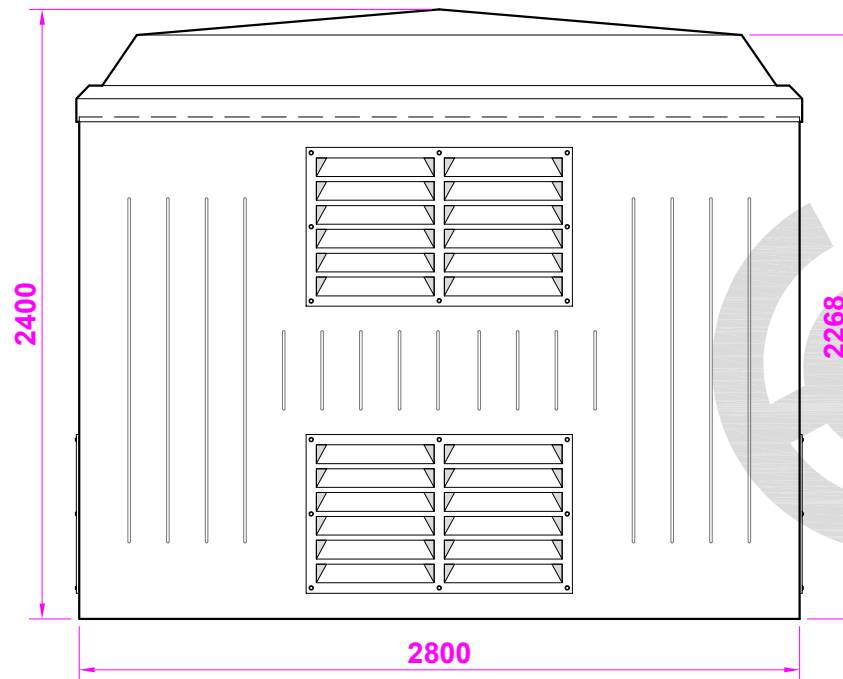
**TYPICAL STEPPED BASE DETAIL (RECOMMENDED)**



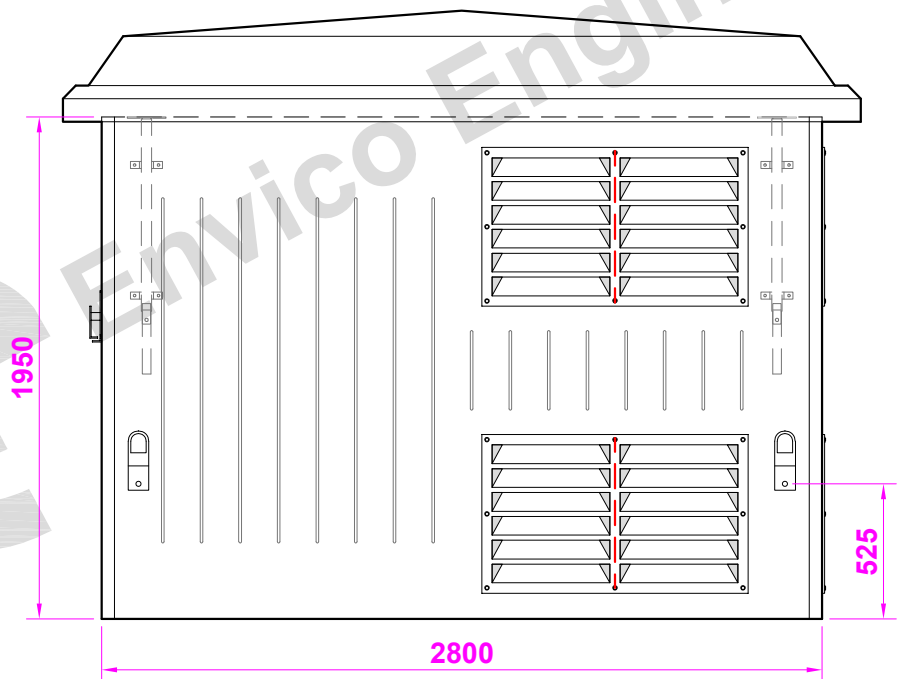
**Elevation (B) (l/h side)**



**Elevation (C) (rear)**



**Elevation (D) (r/h side)**



**PARTS LIST**

ITEM	QTY.	COMMENTS	ITEM	QTY.	COMMENTS
GRP DOUBLE DOOR	1	2500mm X 1850mm	TIMBER BATTENS		ENCAPSULATED IN ROOF
STAINLESS STEEL DOOR HINGES	6	ELEVATION A	GRP VENTS 1035mm X 616mm	6	ELEVATIONS B, C & D
ST - STEEL ESPAGNOLETTE LATCH	1	ELEVATION A	EXPLOSION RELIEF BRACKETS	4	ELEVATIONS B & D
ST-STEEL SPRING TOWER BOLTS	2	ELEVATION A	ST - STEEL FIXING FEET	4	DRILLED FOR M10 X 100 BOLTS
ST-STEEL DOOR STAYS	2	ELEVATION A	ANGER OF DEATH DOOR MOULD	1	ELEVATION A (ON DOORS)
REMOVABLE PLINTH BAR	1	ELEVATION A (IN DOORS)	GENERATOR CABLE HATCH 170mm X 170mm	1	ELEVATION B
LIFTING EYES	4	ELEVATIONS B & D			
CLS TIMBER SUPPORTS		IN VENTILATION			

**CONSTRUCTION DETAILS**

INTERNAL WIDTH : 2690mm  
 INTERNAL DEPTH : 2690mm  
 INTERNAL HEIGHT : 2250mm  
 EXTERNAL WIDTH : 2800mm  
 EXTERNAL DEPTH : 2800mm  
 EXTERNAL HEIGHT : 2400mm

**G.R.P CONSTRUCTION**

LAYER 1. GEL COAT, COLOURED.  
 LAYER 2. 450GRM/M.SQ GLASS & RESIN  
 LAYER 3. 450GRM/M.SQ GLASS & RESIN  
 LAYER 4. 450GRM/M.SQ GLASS & RESIN  
 ALL RESIN TO CLASS II FIRE RETARDANT GRADE.  
 ALL REINFORCING BETWEEN LAYERS 3 & 4



**G.R.P HOUSING  
 MODEL TR7 EXV**  
 APPROX WEIGHT: 500kg



THE DRAWING AND DESIGN IS THE PROPERTY OF ENVICO ENGINEERING LTD. AND WITHOUT THE WRITTEN CONSENT OF ENVICO ENGINEERING LTD. MAY NOT BE COPIED IN WHOLE OR IN PART OR COMMUNICATED TO A THIRD PARTY OR USED FOR ANY PURPOSE.